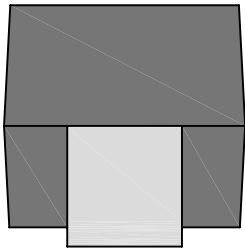
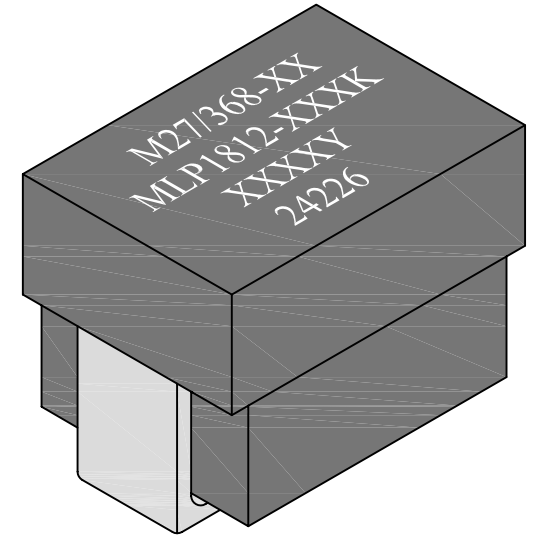
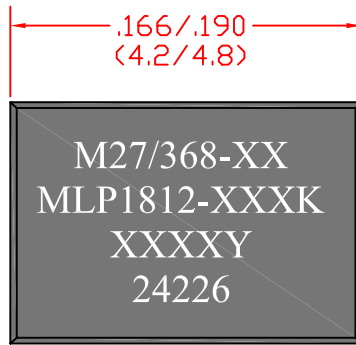


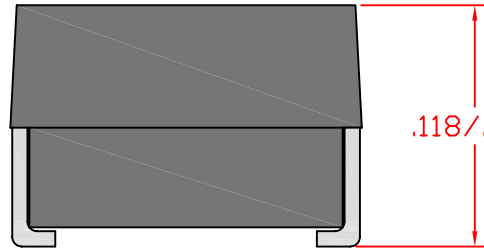
Marking: XXX is the dash number

Example of XXX

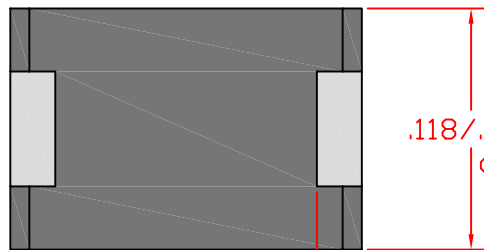
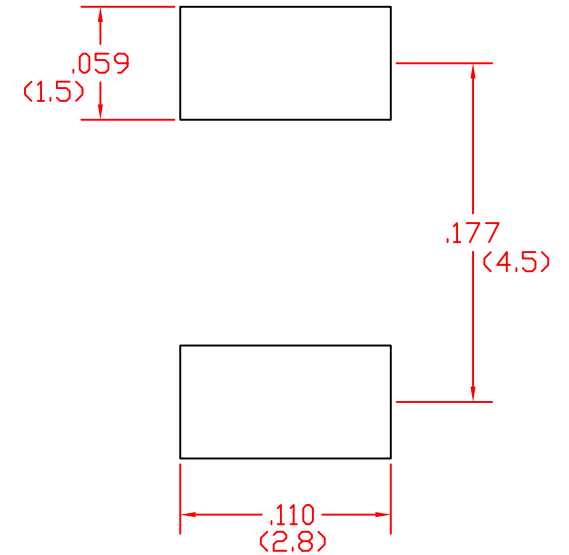
- 101 = 1.0μH
- 102 = 10.0μH
- 103 = 100.0μH



.054/.078 Typ.  
(1.37/1.98)



Recommended Foot Print



.015 Min. Typ.  
(.38)

Tape and Reel Specs:

Pcs./Reel maximum: 2000  
Pitch between parts: 8 mm  
Tape width: 12 mm  
Reel diameter inches: 13

NEXT ASSEM.	USED ON	LTR.	REVISION	BY	DATE
Part #:		<b>MLP1812-Dimensional Specification</b>			
DRAWN BY	KB	APPROVED BY	KB <sup>ENG</sup>	BM <sup>QA</sup>	MFG

Unless otherwise specified dimensions are in inches.

in. (mm)

This drawing or specification is the property of Gowanda Electronics. Copies shall not be reproduced or copied or used as the basis for the manufacture or sale of apparatus without permission.



ONE MAGNETICS PARKWAY  
P.O. BOX 111  
GOWANDA, NEW YORK 14070

Phone Number: (716)532-2234  
Website: www.gowanda.com