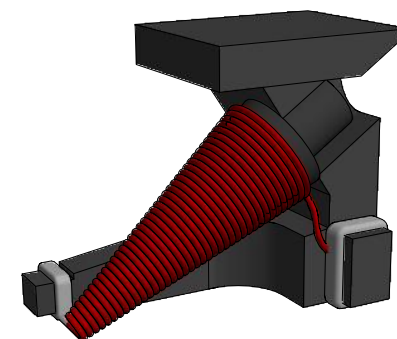
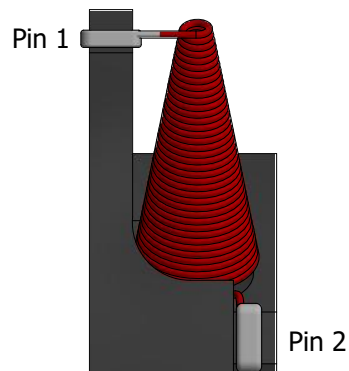
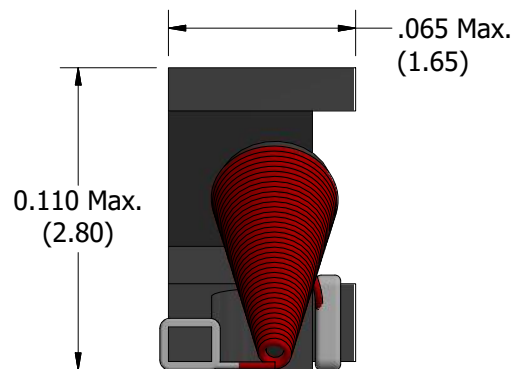
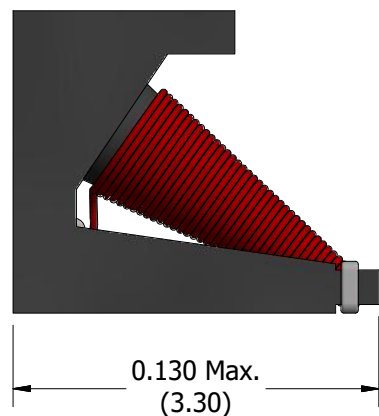
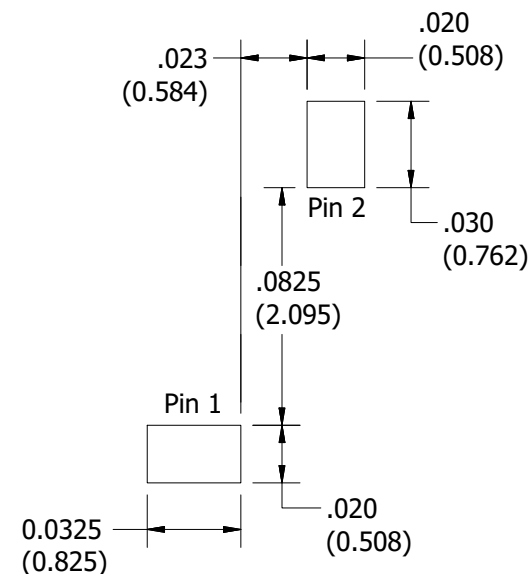


Proprietary



Recommended Footprint



Packaging: Tape and Reel

600 Part per reel

16mm tape width

8mm pitch (spacing between parts)

7 inch reel diameter

NEXT ASSEM.	USED ON	LTR	REVISION	BY	DATE
		E	Updated/Added w/ Pin Locations in Views	CH	09/28/18
Part #:		C100SMNL- Dimensional Specification			
DRAWN BY	JE	Approved By	DP	ENG	QA
					MFG

Unless otherwise specified
dimensions are in inches.
Tolerances on

XX ±
XXX ±
XXXX ±
Angles ±
Fractions ±

This drawing or
specification is the
property of Gowanda
Electronics. Copies shall
not be reproduced or
copied or used as the
basis for the manufacture
or sale of apparatus
without permission.

Gowanda

ONE MAGNETICS PARKWAY
P.O. BOX 111
GOWANDA, NEW YORK 14070

Phone Number: (716) 532-2234
Website: www.gowanda.com
Cage Code: 24226