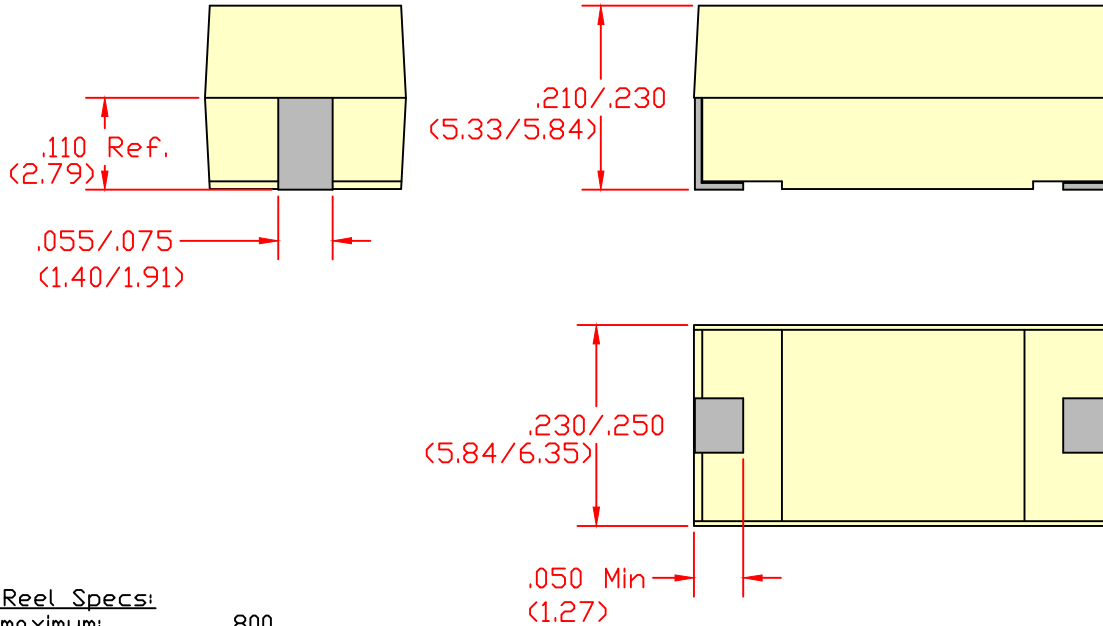
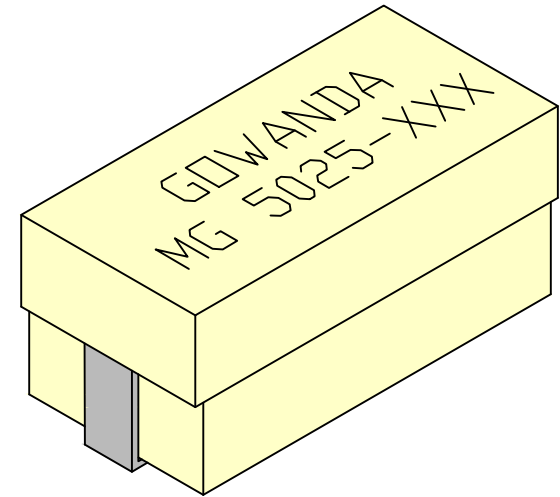
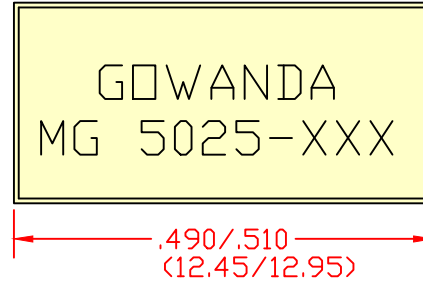


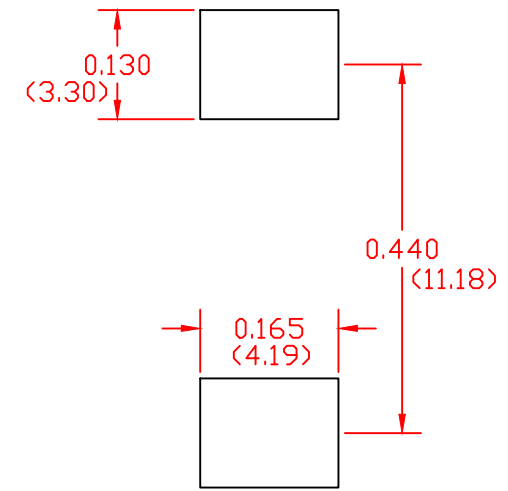
Marking: XXX is the dash #

Example of XXX

- 101 = 1.0 μ H
- 102 = 10 μ H
- 103 = 100 μ H
- 104 = 1000 μ H



Recommended Foot Print



Tape and Reel Specs:

Pcs./Reel maximum: 800
 Pitch between parts: 12 mm
 Tape width: 24 mm
 Reel diameter inches: 13

| NEXT ASSEM. | USED DN | LTR. | REVISION | BY | DATE |
|-------------|---------|--|------------------------------------|------------------|-------------------|
| | | A | Update component color and marking | KB | 4/12/12 |
| Part #: | | SMG5025-Dimensional Specification | | | |
| DRAWN BY | KB | APPROVED BY | KB ^{ENG} | BM ^{QA} | GG ^{MFG} |

Unless otherwise specified dimensions are in inches.

in. (mm)

This drawing or specification is the property of Gowanda Electronics. Copies shall not be reproduced or copied or used as the basis for the manufacture or sale of apparatus without permission.



ONE MAGNETICS PARKWAY
 P.O. BOX 111
 GOWANDA, NEW YORK 14070

Phone Number: (716)532-2234
 Website: www.gowanda.com