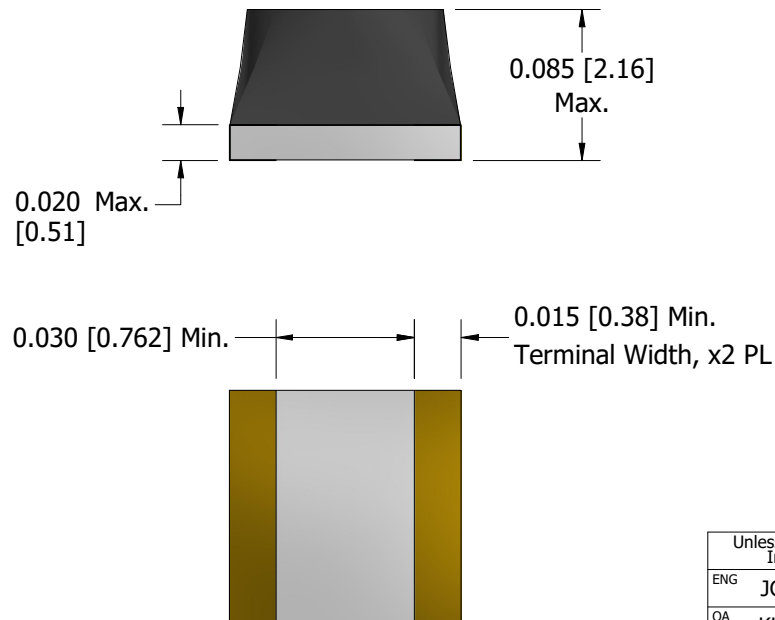
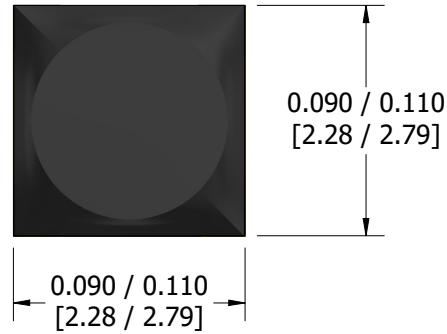
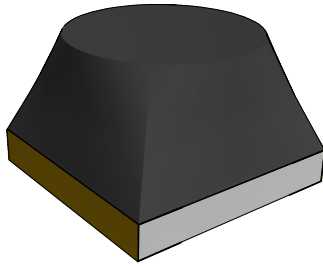
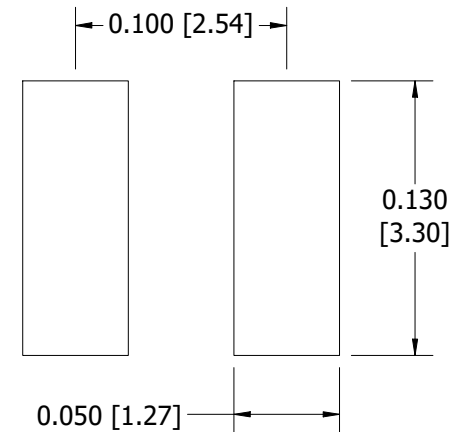


Proprietary

REV.	ECN #	Description	Date	APVD.
Issue		Initial Release		KB
A		0	03/04/10	KB
B		Clarify Dimensions	03/17/14	JE
C	8116	0.030 [0.762] was [0.381], Tape & reel spec 8mm was 12mm, Update Format/Template	10/29/21	TJW



Recommended Footprint




Notes:

- Marking: None on Part
- Metric Dimensions are Reference Only

Tape and Reel Specs:

Pcs./Reel Maximum: 2000
 Pitch between Parts (mm): 4
 Tape Width (mm): 8
 Reel Diameter (in.): 7

Unless otherwise specified Inches and (mm)			 GOWANDA Specification Control Drawing	
ENG	JC	Tolerances On:		
QA	KH	XX ±	Gowanda Electronics Corp. Phone No: (716) 532-2234 One Magnetics Parkway Website: www.gowanda.com Gowanda, New York 14070 Cage Code: 24226	
MFG		XXX ±		
Drawn		XXXX ±		
By	TJW	Angles ±		
Drawn Date:	10/29/21	Formerly	Part Description:	Surface Mount RF Inductor
Sheet: 1 of 1			Gowanda Part #:	MLRF1010
This drawing or specification is the property of Gowanda Electronics. Copies shall not be reproduced or copied or used as the basis for the manufacture or sale of apparatus without permission.				