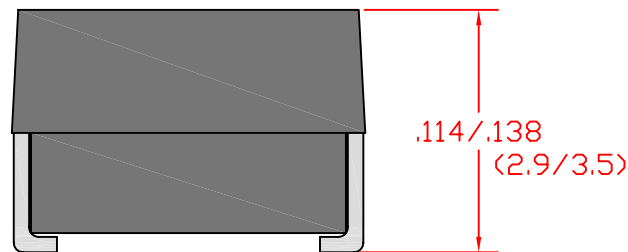
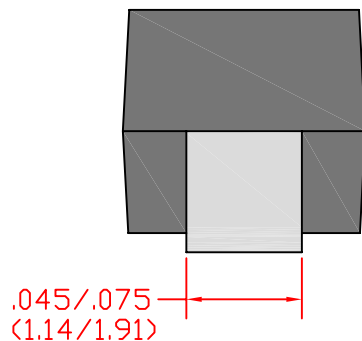
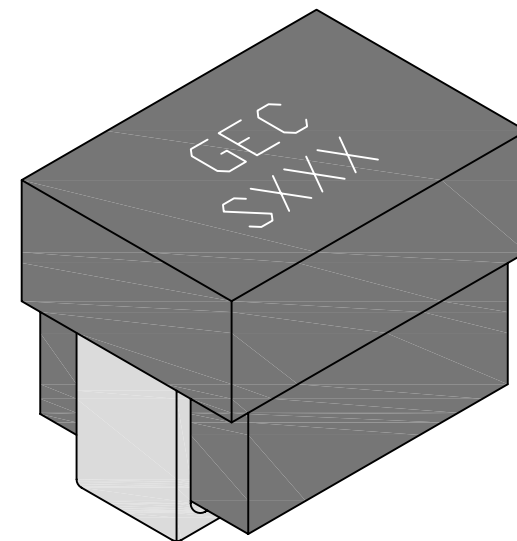
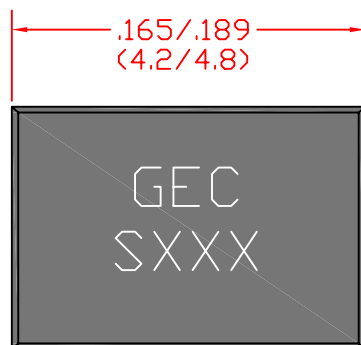


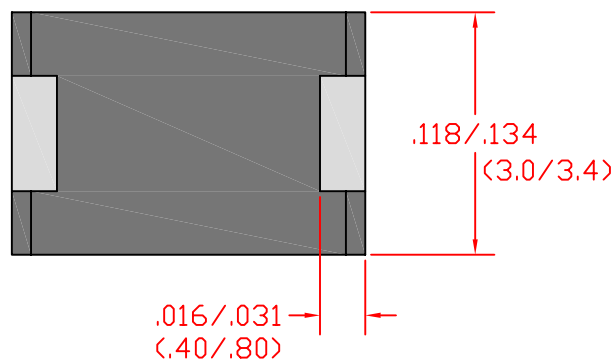
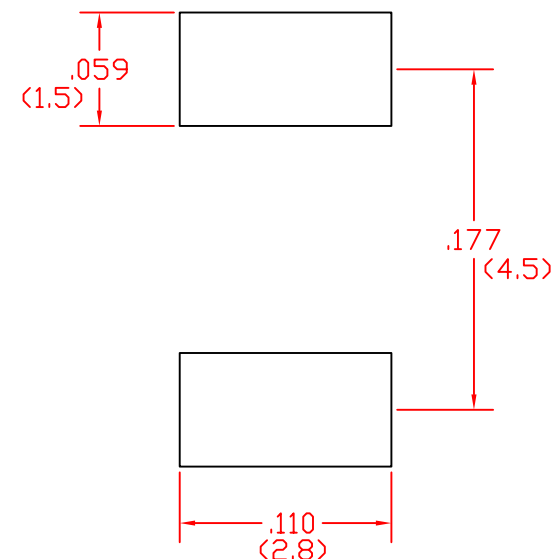
Marking: XXX is the dash #

Example of XXX

100 = .10μH  
 101 = 1.0μH  
 102 = 10.0μH  
 103 = 100.0μH



Recommended Foot Print



Tape and Reel Specs:

Pcs./Reel maximum: 2200  
 Pitch between parts: 8 mm  
 Tape width: 12 mm  
 Reel diameter inches: 13

NEXT ASSEM	USED ON	LTR.	REVISION	BY	DATE
		A	Update dimensions to correspond to the data sheet.	KB	12/8/08
Part #:		SMRF1812S-Dimensional Specification			
DRAWN BY	KB	APPROVED BY	KB	ENG	BM
				QA	GG
				MFG	

Unless otherwise specified dimensions are in inches.  
 in. (mm)

This drawing or specification is the property of Gowanda Electronics. Copies shall not be reproduced or copied or used as the basis for the manufacture or sale of apparatus without permission.

# GOWANDA

ONE MAGNETICS PARKWAY  
 P.O. BOX 111  
 GOWANDA, NEW YORK 14070

Phone Number: (716)532-2234  
 Website: [www.gowanda.com](http://www.gowanda.com)