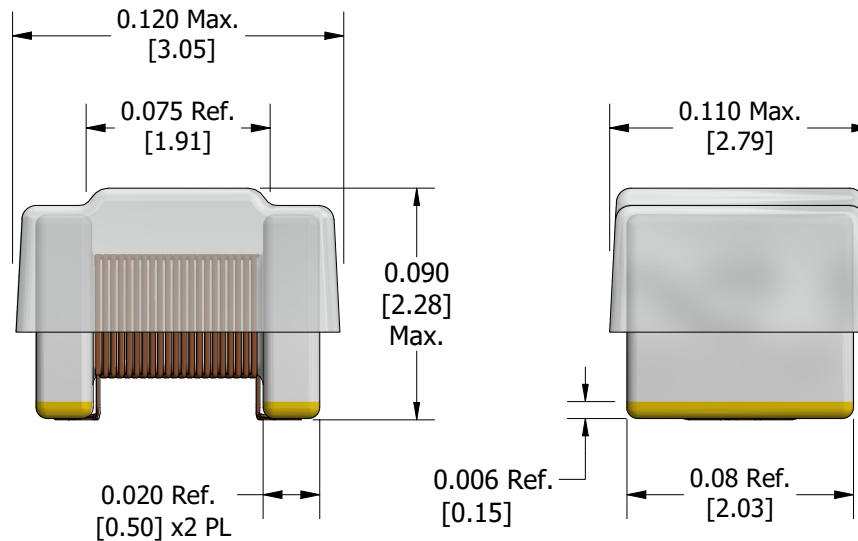
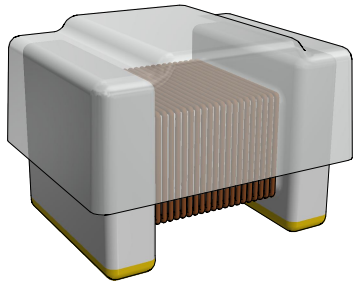
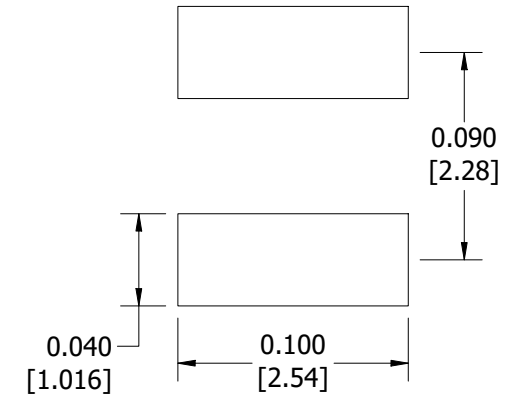


Proprietary

REV.	ECN #	Description	Date	APVD.
Issue		Initial Release	04.30.18	CH
A		Update Format/Template	06.21.21	CH



Recommended Footprint




Notes:

- Ceramic core, terminations are gold plated nickel.

Tape and Reel Specs:

Pcs./Reel Maximum: 2000
Pitch between Parts (mm): 4
Tape Width (mm): 8
Reel Diameter (in.): 7

Unless otherwise specified Inches and (mm)			 GOWANDA Specification Control Drawing	
ENG	JC	Tolerances On:		
QA	KH	XX ± 0.010 XXX ± 0.005 XXXX ± 0.002	Gowanda Electronics Corp. Phone No: (716) 532-2234 One Magnetics Parkway Website: www.gowanda.com Gowanda, New York 14070 Cage Code: 24226	
MFG		Angles ± Fractions ±		
Drawn By	CH	Used On		
Drawn Date:	06.21.21	Formerly		
Sheet: 1 of 1			Gowanda Part #: CC4H1008	
This drawing or specification is the property of Gowanda Electronics. Copies shall not be reproduced or copied or used as the basis for the manufacture or sale of apparatus without permission.				