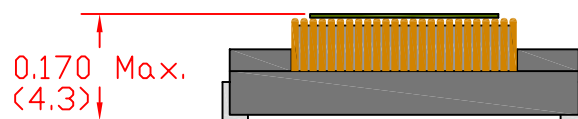
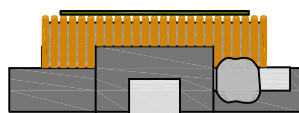
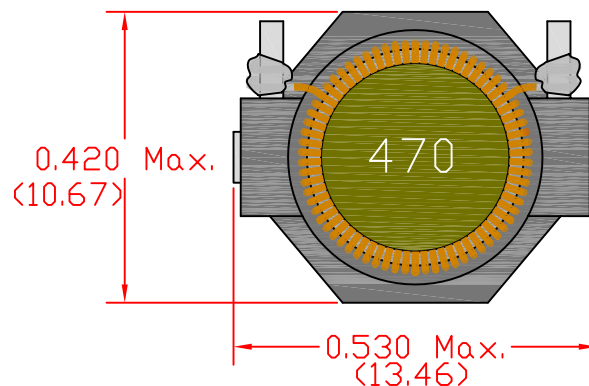
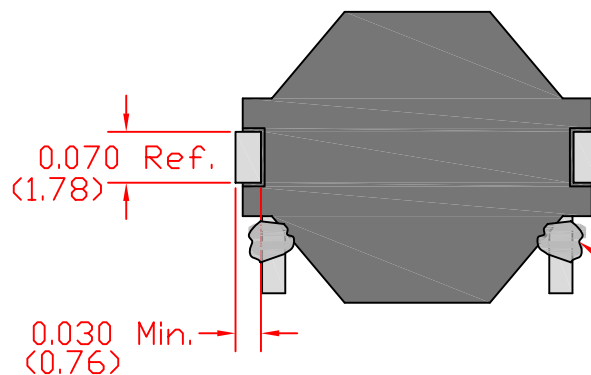
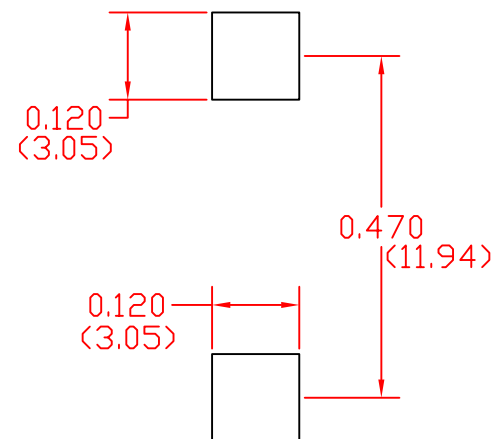


Marking: L in μH



Recommended
Foot Print



Wire is wrapped around
terminal and soldered.

Tape and Reel Specs:

Pcs./Reel maximum: 700
Pitch between parts: 16 mm
Tape width: 24 mm
Reel diameter inches: 13

NEXT ASSEM.	USED ON	LTR.	REVISION	BY	DATE
Part #:		SMT3106-Dimensional Specification			
DRAWN BY	KB	APPROVED BY	KB ^{ENG}	BM ^{QA}	GG ^{MFG}

Unless otherwise specified
dimensions are in inches.

in. (mm)

This drawing or
specification is the
property of Gowanda
Electronics. Copies shall
not be reproduced or
copied or used as the
basis for the manufacture
or sale of apparatus
without permission.

GOWANDA

ONE MAGNETICS PARKWAY
P.O. BOX 111
GOWANDA, NEW YORK 14070

Phone Number: (716)532-2234
Website: www.gowanda.com